

ML

MAGIA DELLA LANA

LANA GATTO®

**FANCY YARNS:
MULTICOLOUR
EFFECTS**

Fall Winter
2025/2026





Size: UK 8/10 (12/14) - US 4/6 (8/10) - EU 34/36 (38/40)

Note: figures in brackets () refer to larger size. Where only one figure is given this refers to both sizes.

Skill Level: intermediate

How much yarn: 3 (4) balls (each ball 100g and 250m) of **Dublino** yarn (41% Baby Alpaca, 41% Extrafine Merino Wool SW, 18% Nylon) shade no. 31084

Needles: A pair of 6.00mm knitting needles

A 6.50mm knitting needles

A Double-pointed (Dp) needle

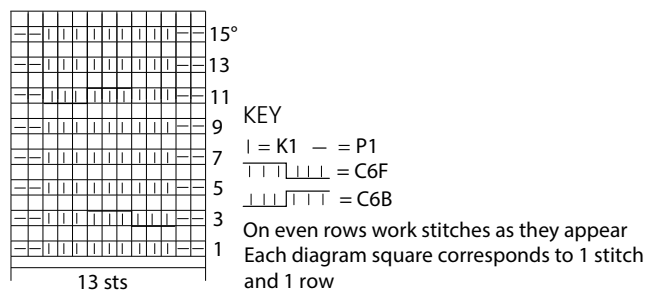
Sewing needle: Yarn needle with rounded point

STITCHES

Using needles: K1, P1 rib - Stocking stitch (st st)

CABLE MOTIF: (worked over 13 sts) follow diagram and key. Each diagram square corresponds to 1 stitch and 1 row. Rep the Motif 16 rows throughout. Work crossed sts as follows: **6 Crossed Left stitches (C6F)** = slip 3 sts onto Dp needle, hold to the front, K3 sts, K3 sts from Dp needle. **6 Crossed Right stitches (C6B)** = slip 3 sts onto Dp needle, hold to the back, K3 sts, K3 sts from Dp needle.

CABLE MOTIF



TENSIONS

12 sts and 17 rows measure 10cm square over stocking stitch with 6.50 mm needles. The 13 Cable sts measure approx 8cm in width. Take time to check tensions before starting work: it is essential to work to the stated tensions to achieve success.

INSTRUCTIONS

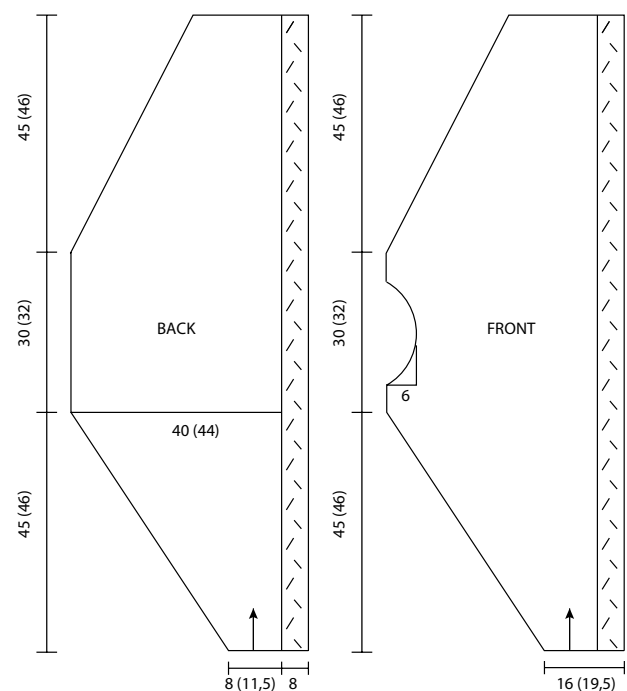
Back and sleeves: work in one piece sideways, starting from a **sleeve**. With 6.50mm needles cast on 23 (27) sts and work as follows: 13 Cable Motif stitches and 10 (14) sts in stocking st, increasing 1 st on left side, inside 2 sts, every alternate row 38 (39) times. When work measures 45(46)cm from beg, shape **neck**: cont to work without inc on 61 (66) sts obtained for 30(32)cm, corresponding to 52 (56) rows. Then work other sleeve in the mirrored

shape, decreasing 1 st on left side, inside 2 sts, every alternate row 38 (39) times. When work measures 120(124)cm, cast off rem 23 (27) sts.

Front and sleeves: work as Back until piece measures 45(46)cm from beg; now shape **neck**: work 9 rows without decreasing, then cast off 2 sts on next and every following alternate row 3 times and dec 1 st (= 6 rows), work 22 (26) rows without dec, then inc 1 st and cast on 2 new sts on next and every following alternate row 3 times (= 6 rows) and work other 9 rows without increasing: 52 (56) rows have been worked for neck shaping. When neck shaping is completed, work other sleeve as given for Back.

FINISHING

Sew a shoulder-sleeve seam. For **neck**, on RS of work, pick up approx 62 (70) sts around Front-and-Back neckline and work 19(20)cm K1, P1 rib, then cast off. Sew neck seam 9(10)cm on WS an 10cm on then sew other shoulder-sleeve seam. **Cuffs:** (make 2) for each cuff, with 6.00mm needles pick up and K 44 (48) sts at lower edge of each sleeve and work K1, P1 rib, dec 14 sts evenly on 1st row. When cuff measures 11cm, cast off rem 30 (34) sts. Sew approx 45(46)cm underarm seams.





Size: UK 8/10 (12/14) - US 4/6 (8/10) - EU 34/36 (38/40)

Note: figures in brackets () refer to larger size. Where only one figure is given this refers to both sizes.

Skill Level: intermediate

How much yarn: 8 (9) balls (each ball 50g and 105m) of **Lisbona** yarn (50% Extrafine Merino Wool, 50% Cotton) shade no. 31061

Needles: A pair of 5.50mm knitting needles

Sewing needle: Yarn needle with rounded point

STITCHES

Using needles: K1, P1 rib - Stocking stitch (st st)

TENSION

16 sts and 23 rows measure 10cm square over stocking stitch with 5.50 mm needles. Take time to check tension before starting work: it is essential to work to the stated tension to achieve success.

INSTRUCTIONS

Back: with 5.50mm needles cast on 67 (75) sts and, for border, work 4 rows in K1, P1 rib. Cont to work in stocking st. When Back measures 36(38)cm from beg, shape armholes. Cast off 3 (4) sts at beg of next 2 rows, then dec 1 st at each end, inside first and last 2 sts, on next and every following alternate row 3 times. When armhole measures 18(20)cm, cast off rem 55 (61) sts.

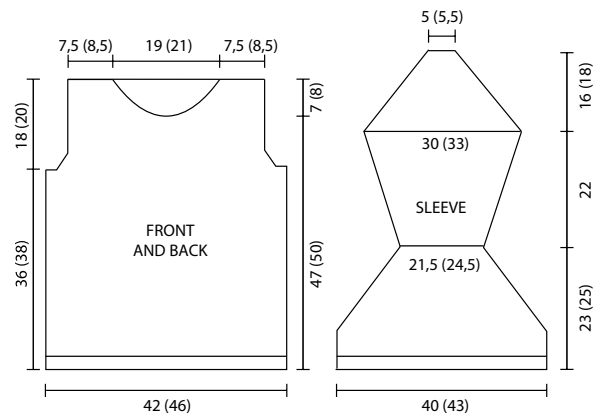
Front: work as Back until Front measures 47(50)cm from beg. Shape neck: cast off centre 15 (17) sts. Join another ball of yarn and cont to work separately on either side, casting off on neck edge every alternate row: 3 sts once and 2 sts once, then dec on neck edge 1 st on next and every following alternate row 3 times (8 sts have been decreased on each neck side). When neck shaping measures 7(8)cm, cast off rem 12 (14) sts of each shoulder.

Sleeves: for each sleeve, with 5.50mm needles cast on 64 (69) sts and, for border, work 4 rows in K1, P1 rib. Then work **12 (16) rows** in stocking st. Cont to work in stocking st, decreasing as follows: **13th (17th) row:** K7, * K2tog,

K6(7); rep from * 6 (5) more times ending with K1 for 1st size (K2tog and K6 for 2nd size): 7 sts have been decreased across one row. Work 11 rows without decreasing. **25th (29th) row:** K6, * K2tog, K5(6); rep from * 6 more times, but end with only K2 for 1st size: 7 sts have been decreased across one row. Work 11 rows without decreasing. **37th (41st) row:** K5, * K2tog, K4; rep from * 6 (7) more times ending with K2tog and K1 for 1st size (only K2 for 2nd size): 8 sts have been decreased across one row. Work 11 rows without decreasing. **49th (53rd) row:** K4, * K2tog, K3; rep from * 6 (7) more times ending with K2tog and K1 for 1st size (K3 for 2nd size): 8 sts have been decreased across one row. Work **1 row** without decreasing. [= 34 (39) sts.]. **51st (55th) row:** K2, 1 increasing (= K1 and K1 through back loop into same st), K to last 3 sts, 1 inc, K2. Rep incs on following 6th row once more, then every following 8th row 5 times. There are 48 (53) sts. When Sleeve measures 45(47)cm, shape top: cast off 3 sts at beg of next 2 rows, then dec 1 st at each end, inside first and last 2 sts, on next and every alternate row 17 (19) times. When sleeve top measures 16(18)cm, cast off rem 8 (9) sts.

FINISHING

Sew a shoulder seam. For **neck**, pick up approx 68 (80) sts around Back-and-Front neckline and work 11(13)cm in stocking st, then cast off. Sew other shoulder and neck seam. Set in sleeves. Sew side and sleeve seams.





Size: UK 8/10 (12/14) - US 4/6 (8/10) - EU 34/36 (38/40)

Note: figures in brackets () refer to larger size. Where only one figure is given this refers to both sizes.

Skill Level: intermediate

How much yarn: 5 balls (each ball 100g and 260m) of **Madrid** yarn (80% Fine Merino Wool, 20% Silk) shade no. 31078

Needles: A pair of 5.00mm knitting needles
A 5.50mm knitting needles

Sewing needle: Yarn needle with rounded point

STITCHES

Using needles: K1, P1 rib

MOCK FISHERMAN'S RIB: (worked over a multiple of 4 sts)

1st row: * K2, P1, K1; rep from* to end. **2nd row:** * K3, P1; rep from* to end. Rep these 2 rows throughout.

TENSION

18 sts and 27 rows measure 10cm square over Mock Fisherman's rib with 5.00 mm needles. Take time to check tension before starting work: it is essential to work to the stated tension to achieve success.

INSTRUCTIONS

Back: with 5.00mm needles cast on 82 (90) sts and work in Mock Fisherman's rib with 1 selvedge stitch at each end until Back measures 41(43)cm from beg. Shape armholes: cast off 4 sts at beg of next 2 rows, then dec 1 st at each end, inside 2 sts, on next and every following alternate row 4 (5) times. When armhole measures 19(21)cm, cast off rem 66 (72) sts.

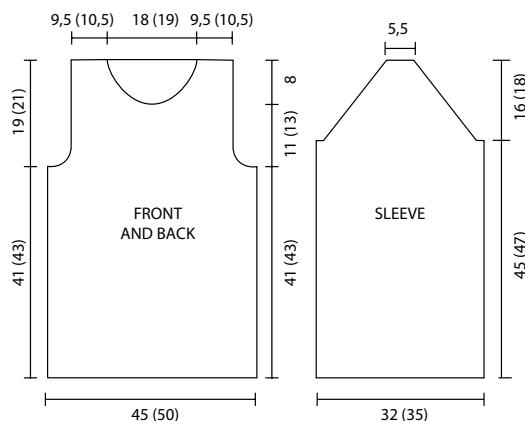
Front: work as Back until armhole measures 11(13)cm; now shape neck: cast off centre 20 (22) sts, join another ball of yarn and cont separately on each side, casting off on neck edge every alternate row: 3 sts once, 2 sts once, then dec 1 st once. When neck shaping measures 8cm, cast off rem 17 (19) sts for each shoulder.

Sleeves: for each sleeve, with 5.00mm needles cast on 58 (64) sts and work in Mock Fisherman's rib. Add 1 selvedge stitch at each end only for 1st size. When Sleeve measures 45(47)cm from beg, shape top: cast off 4 sts at each end, then dec 1 st at each end, inside 2 sts, on next and every following alternate row 20 (23) times. When sleeve top measures 16(18)cm, cast off rem 10 sts.

Collar: with 5.50mm needles cast on 44 sts and work in Mock Fisherman's rib until Collar measures 55 (57)cm from beg. Cast off. Sew Collar to create a ring, joining together cast-on and cast-off rows.

FINISHING

Sew a shoulder seam. For **neck border**, on RS of work, with 5.00mm needles pick up about 74 (80) sts around Front-and-Back neckline and work 6 (8)rows in K1, P1 rib, then cast off. Sew other shoulder and neck border seam. Set in sleeves, then sew sleeve and side seams. When you wear the sweater, you can let the collar fall softly as it is, or keep it folded in half.





With puffed sleeves

LANA GATTO®

Size: to fit oversize UK 8/10 (12/14) - US 4/6 (8/10)
EU 34/36 (38/40)

Note: figures in brackets () refer to larger size. Where only one figure is given this refers to both sizes.

Skill Level: easy

How much yarn: 2 (3) hanks (each hank 100g and 200m) of **Roma** yarn (64% Wool, 20% Nylon, 16% Alpaca) shade no. 31089

Needles: A pair of 8.00mm knitting needles

A 10.00mm knitting needles

Sewing needle: Yarn needle with rounded point

STITCHES

Using needles: K1, P1 rib - Stocking stitch (st st)

TENSION

8 sts and 12 rows measure 10cm square over stocking stitch with 10.00 mm needles. Take time to check tension before starting work: it is essential to work to the stated tension to achieve success.

INSTRUCTIONS

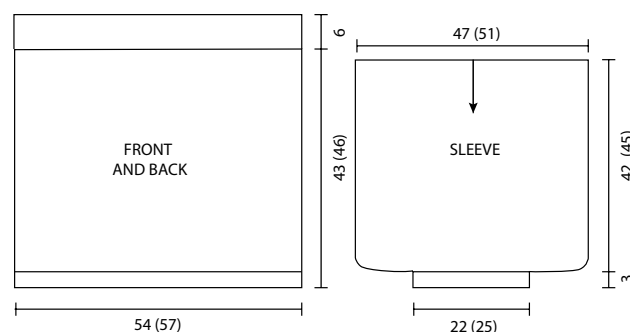
Back: with 8.00mm needles cast on 43 (46) sts and work 4 rows in stocking stitch. Change needles and with 10.00mm needles cont to work in st st. When Back measures 43 (46)cm from beg, work 6cm K1, P1 rib. Then cast off.

Front: work as Back.

Sleeves: sew each 13(15)cm shoulder seam. Work each sleeve top down. With 10.00mm needles, on RS of work, pick up and K 38 (41) sts along Back and Front. Work in stocking st. When Sleeve measures 42(45)cm from beg, change needles and with 8.00mm needles work other 4 rows, decreasing 11 sts evenly across first row. Then cast off rem 27 (30) sts.

FINISHING

Sew side and sleeve seams.



Project made by **Elsa Faccio**



Size: S – **Skill Level:** intermediate

For size M, start 4 more chains for each part of the sweater, which become 8 for size L. Work 2 more rows in height for each additional size. Also calculate 1 more ball of yarn for each additional size.

How much yarn: 6 balls (each ball 50g and 175m) of **Parigi** yarn (56% Wool, 25% Nylon, 19% Alpaca) shade no. 31127

Hook: A 6.50 mm crochet hook

Sewing needle: Yarn needle with rounded point

STITCHES

Using hook: chain (ch) – Slip stitch (ss) – Treble (tr)

TENSION

9 sts and 6 rows measure 10cm square over Bobble fancy stitch (worked on even number of sts) with 6.50 mm crochet hook. Take time to check tensions before starting work: it is essential to work to the stated tensions to achieve success.

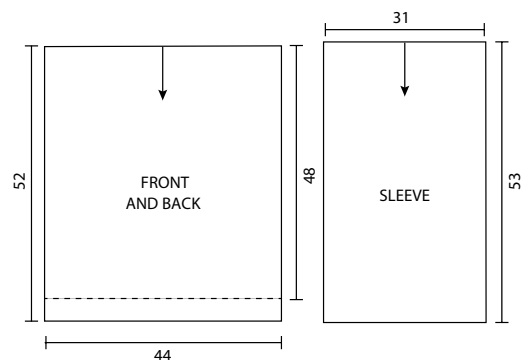
INSTRUCTIONS

Back: work top down. With 6.50mm hook ch 40 plus 4 turning ch and work Bobble fancy stitch as follows: **foundation row:** 1 tr into 5th ch from hook, 1 tr into each ch to end, turn. **1st row:** (RS of work) ch3 (corresponding to 1st tr), * 1 elongated bobble (= yarn over hook, insert hook into next st and draw a loop, yarn over hook, insert hook into following st and draw a loop – now there are five loops on hook – yarn over hook and pull through all loops), ch1; rep from * ending with a tr into last st; turn. **2nd row:** ch3 (corresponding to 1st tr), 1 tr into each ch and elongated bobble of previous row, ending with 1 tr

at top of starting ch at beg of previous row, turn. Rep last 2 rows 15 times. Fasten off.

Front: work top down. With 6.50mm hook, ch 42 plus 4 turning ch and work as Back but rep last 2 row of Bobble fancy stitch 14 times instead of 15. Fasten off.

Sleeves: work top down. Sew 8cm shoulder seams. Then sew approx 16cm (inc by 2cm for each size up) side seams starting from lower edge, so armholes have been created. For each sleeve, with 6.50mm hook, work as follows: **foundation round:** 1 ss at top of side seam, ch3 (corresponding to 1st tr), 27 tr (inc by 4 sts for each size up) around armhole, ending with a ss into 3rd of first 3 ch. **1st round:** ch3 (corresponding to 1st tr), * 1 elongated bobble, ch1; rep from * ending with 1 tr and 1 ss into 3rd of first 3 ch. **2nd round:** ch3 (corresponding to 1st tr), 1 tr into each ch and elongated bobble of previous row, ending with 1 tr and 1 ss into 3rd of first 3 ch. Rep last 2 rounds 15 times, then rep 1st round once more (inc by 2cm for each size up). Fasten off.





Fringed poncho

LANA GATTO®

Size: fits from UK 8/12 – US 4/8 – EU 34/38

Skill Level: advanced

How much yarn: 10 hanks (each hank 100g and 50m) of **Budapest** yarn (100% Merino Wool) shade no. 31169

Needles: A 12.00mm circular needle with 60cm cable
A 12.00mm circular needle with 100cm cable

Sewing needle: Yarn needle with rounded point

Other items: Large crochet hook to knot fringes
Stitch markers

STITCHES

Using needles: K2, P2 rib – CIRCULAR STOCKING STITCH (ST ST): all rounds K.

TENSION

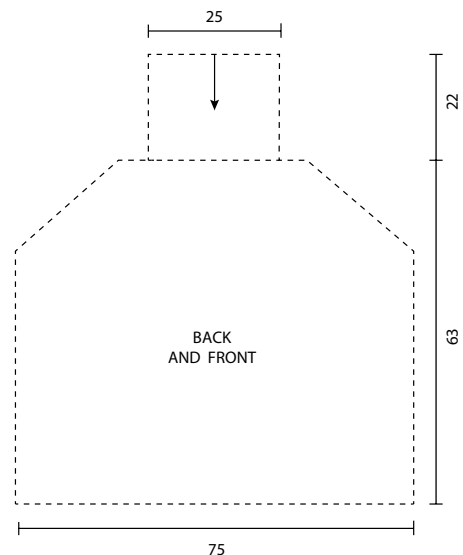
8 sts and 12 rounds measure 10cm square over stocking stitch with 12.00 mm circular needle. Take time to check tension before starting work: it is essential to work to the stated tension to achieve success.

INSTRUCTIONS

Work top down in one piece, starting from neck. Using 12.00mm circular needle with 60cm cable cast on 41 sts and join work in round as follows: slip 1st stitch from right needle to left needle, then pass last st over slipped st. 40 sts remain. Place 1 stitch-marker (SM) on right-hand needle before passed st to indicate round beg, corresponding to Back center. For **neck** work 22cm in K2, P2 rib, increasing 16 sts evenly across last round. There are 56 sts. Cont to work in stocking st and, beginning from 4th round and Back center, increase sts as follows: **next round:** K2, M1 (pick up horizontal yarn between last st and next st and knit into the back of it =1 st increased), *

K3, M1, K4, M1; rep from; rep from * 6 more times, K3, M1, K2: 16 sts have been increased in one round. Rep these incs, above previous, every following 5th round 3 more times. There are 120 sts. When the number of stitches makes it necessary, change to circular needle with 100cm cable and cont to work without increasing until piece measures 63cm from neck. Then cast off.

Fringes: complete Poncho knotting fringes around lower edge. Cut lengths of yarn to approx 30cm. Take 2 strands and fold in half. Insert hook in a stitch and catch the folded end of yarn. Draw it through and then take the ends of the yarn through the loop. Pull on strands to tighten. Rep leaving 3 sts free between fringes.





Size: UK 8 (12) – US 4 (8) – EU 34 (38)

Note: figures in brackets () refer to larger size. Where only one figure is given this refers to both sizes.

Skill Level: intermediate

How much yarn: 3 (4) hanks (each hank 100g and 310m) of **Anniversary** yarn (64% Ultrafine Merino Wool SW, 20% Silk, 16% Cashmere – Hand printed) shade no. 31172

Needles: A pair of 5.50mm knitting needles

Sewing needle: Yarn needle with rounded point

STITCHES

Using needles: stocking stitch (st st)

Reverse stocking stitch (rev st st)

TENSION

18 sts and 26 rows measure 10cm square over reverse stocking stitch with 5.50 mm needles. Take time to check tension before starting work: it is essential to work to the stated tension to achieve success.

INSTRUCTIONS

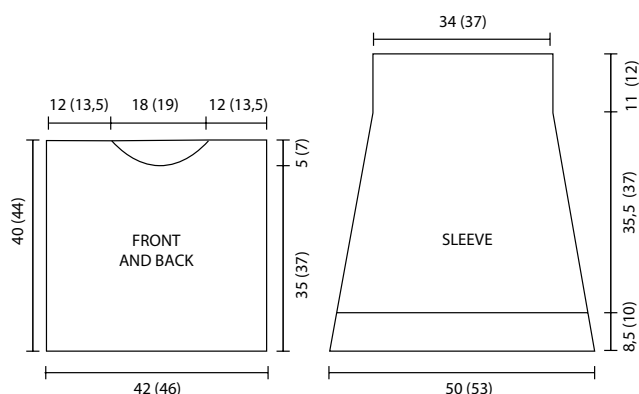
Back: with 5.50mm needles cast on 76 (83) sts and work in rev stocking st until Back measures 40(44)cm from beg. Cast off all sts loosely.

Front: with 5.50mm needles cast on 76 (83) sts and work in rev stocking st until Front measures 35(37)cm from beg. Shape neck as follows: cast off centre 16 (19) sts, join another ball of yarn and continue separately on either side, casting off on neck edge every alternate row: 3 sts once, 2 sts once, then dec 1 st every alternate row 3 times. When neck shaping measures 5(7)cm, cast off rem 22 (24)sts for each shoulder.

Sleeves: for each sleeve, with 5.50mm needles cast on 90 (96) sts and work 22 (26) rows in stocking st, then continue in reverse stocking st. AT THE SAME TIME dec 1 st at each end, inside first and last 2 sts, on next and every following 8th row 14 times. When Sleeve measures 44(47)cm from beg, cont to work on rem 62 (68) sts, but without decreasing, for 29 (31) more rows. Then, cast off.

FINISHING

Sew a shoulder seam. For **neck**, on RS of work, pick up and K70 (80) sts around Front-and-Back neckline and work 11(13)cm in stocking st, then cast off. Sew other shoulder and neck seam. Set in sleeves, then sew sleeve and side seams. Fold on WS a 2cm hem at lower edge of Front, Back and Sleeves and sew it with slip stitches.





Crew neck shaded

LANA GATTO®

Size: to fit oversize 10 – US 6 – EU 36

Skill Level: intermediate

How much yarn: 8 balls (each ball 50g and 110m) of **Tiramisù** yarn (38% Virgin Wool, 24% Cotton, 19% Mohair, 19% Alpaca) shade no. 31121

Needles: A pair of 4.50mm knitting needles
A pair of 5.00mm knitting needles. An additional 5.00mm knitting needle (for casting off)

Hook: A 4.00 mm crochet hook

Sewing needle: Yarn needle with rounded point

Other items: Large and small stitch-holders

STITCHES

Using needles: stocking stitch (st st)

Using hook: slip stitch (ss) – Double crochet (dc)

CRAB STITCH: this is dc worked from left to right. Start at the left-hand end of the row you are working, insert the hook in the first st to the right and complete a dc stitch. Repeat in the next st to the right and continue to the end of the row.

TENSIONS

14 sts and 20 rows measure 10cm square over stocking stitch with 5.00 mm needles.

15 sts and 21 rows measure 10cm square over stocking stitch with 4.50 mm needles.

Take time to check tensions before starting work: it is essential to work to the stated tensions to achieve success.

INSTRUCTIONS

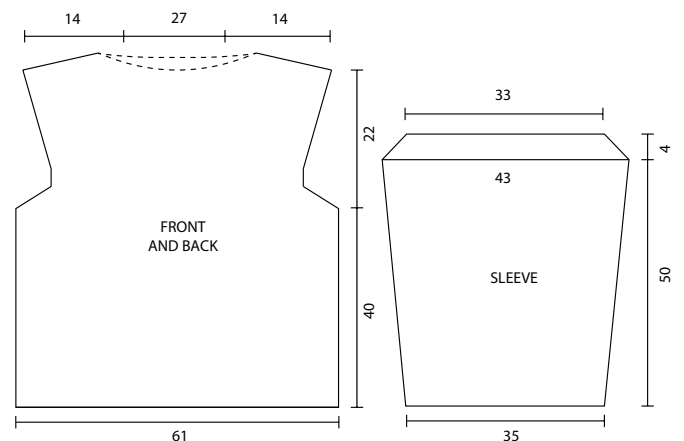
Back: with 5.00mm needles cast on 85 sts and work in stocking st. When work measures 40cm from beg, shape armholes: dec 2 sts at each end, inside 2 sts, on next and every following alternate row 4 times, then on 4th following row once more: 65 sts remain. For dec, work K3tog at beg of row and SK2P (= slip 1 st, knit 2 sts together, pass slipped st over K2 tog) at end of row. Work 6 rows straight. Then inc 1 st (K1 and K1 t.b.l. into same st) at each end, inside 4 sts, on next and every following 4th row 6 times. There are 77 sts. When armhole measures 22cm, **shape shoulders**, leaving 4 sts unworked on needle at end of next 4 rows. Then **shape neck and cont to shape shoulders**. For neck shaping, place central 17 sts a large stitch-holder, join another ball of yarn and cont to work separately on either side, leaving on small stitch-holders at neck edge every alternate row 5 twice. **AT THE SAME TIME**, for each shoulder continue to leave on needle 4 sts on next and every following alternate row 3 times. With crochet hook work a row of ss around neck shaping, picking up side sts and central 17 sts on stitch-holders. Fasten off.

Front: with 5.00mm needles cast on 85 sts and work in stocking st. When work measures 40cm from beg, shape armholes: dec 2 sts at each end, inside 2 sts, on next and every following alternate row 4 times, then on 4th following row once more: 65 sts remain. Work 6 rows straight. Then inc 1 st at each end, inside 4 sts, on next and every following 4th row 6 times. There are 77 sts. When armhole measures 22cm, **shape neck and shoulders**. For neck shaping, place central 17 sts on a large stitch-holder, join another ball of yarn and cont to work separately on either side, leaving on small stitch-holders at neck edge every alternate row: 4 sts twice, then 1 st twice. **AT THE SAME TIME**, for each shoulder leave unworked on needle 4 sts on next and every following alternate row 5 times. With crochet hook work a row of ss around neck shaping, picking up side sts and central 17 sts on stitch-holders. Fasten off.

Sleeves: for each sleeve, with 4.50mm needles cast on 53 sts. Work in stocking st, inc 1 st at each end, inside first and last 4 sts, on next and every following 14th row 6 times: there are 65 sts. When sleeve measures 50cm, shape sleeve top. Dec 2 sts at each end, inside first and last 2 sts, on next and every following alternate row 4 times. When sleeve top measures 4cm, cast off rem 49 sts.

FINISHING

Join shoulder seams, using 3 needle cast off technique (= hold the needles with RS towards each other. Use a third needle and knit 1 st on each needle together, knit two more together and then slip 1st st over the next. Repeat knitting 2 tog and then cast off). Set in sleeves. Sew sleeve and side seams. With crochet hook, work a round of crab st around lower edge of Back and Front and each Sleeve.



Project made by **Merceria Sudest di Stepanchuk Halyna** "Creare con sud est"



Size: UK 10 – US 6 – EU 36 – **Skill Level:** advanced
Sweater measurement: 51cm wide (102cm circumference)
 54cm high (in the highest part of Back)
 Sleeve width: 16cm under armhole, 11cm at wrist.

How much yarn: 9 balls (each ball 50g and 120m)
 of **Saint Honorè** yarn (36% Nylon, 33% Wool,
 23% Polyester, 8% Alpaca) shade no. 31103

Needles: A 3mm circular needle with 40cm cable
 A 4mm circular needle with 40cm cable
 A 4mm circular needle with 80cm cable
 A pair of 3.75mm knitting needles

Hook: A 3.75mm crochet hook

Sewing needle: Yarn needle with rounded point

Other items: Row counter

Stitch-markers whose 3 red and 1 pink

STITCHES

Using needles:

STOCKING STITCH (ST ST): 1 row K, 1 row P.

CIRCULAR STOCKING STITCH: all rounds K.

KNIT INCREASE: MIK = pick up horizontal yarn between last st and next st and knit into the back of it (K1 increased).

PURL INCREASE: MIP = pick up horizontal yarn between last st and next st and purl into the back of it (P1 increased).

I-CORD CASTING OFF TECHNIQUE: cast on 3 sts. Work * K2, K2tog t.b.l., move from right needle to left needle last 3 sts obtained without working them; rep from * until 3 sts remain on needle, then slip, slip and pass both slipped sts over last st.

USING CROCHET HOOK : chain (ch) – Slip stitch (ss).

TENSION (after washing item)

22 sts and 30 rounds measure 10cm square over stocking stitch with 4.00 mm circular needle. Take time to check tension before starting work: it is essential to work to the stated tension to achieve success.

INSTRUCTIONS

Work sweater in the round, using “contiguous” technique top-down without seams. **NECK** With a scrap yarn in contrasting colour and a 3.75mm crochet hook ch110, join with a ss into first ch to form a ring. From Saint Honorè yarn leave unworked first 5m yarn, then using 4mm (no. 8) circular needle with 40cm cable pick up 110 sts from scrap ch round (1 st from each ch). Work 1st row placing stitch-markers as follows: pink stitch-marker (=SM), K8, red SM, K53, red SM, K8, red SM, K41. The Anatomical Neck is worked stocking stitch in back-and-forth rows: increase sts outside the 8 sts indicated by SM. SET ROW COUNTER TO ZERO. While working, it is advisable to switch to circular needle with 80cm cable, when the stitches increase. **Row 0:** K1, slip 1 stitch (= yarn in front, pass a st from left needle to right needle without knitting, yarn in back, return st on left needle without knitting), turn the work. **Row 1:** P5, slip 1 st, turn the work. **Row 2:** K3, MIK, K3,

slip 1 st, turn the work. **Row 3:** P2, MIP, P9, slip 1 st, turn the work. **Row 4:** K9, MIK, K4, slip 1 st, turn the work. **Row 5:** P48, slip 1 st, turn the work. **Row 6:** K1, MIK, K4, slip 1 st, turn the work. **Row 7:** P4, MIP, P3, slip 1 st, turn the work. **Row 8:** K2, MIK, K10, slip 1 st, turn the work. **Row 9:** P14, slip 1 st, turn the work. **Row 10:** K3, MIK, K46, MIK, K7, slip 1 st, turn the work. **Row 11:** P6, MIP, P48, MIP, P7, slip 1 st, turn the work. **Row 12:** K6, MIK, K50, MIK, K10, slip 1 st, turn the work. **Row 13:** P71, slip 1 st, turn the work. **Row 14:** MIK, K9, MIK, K52, MIK, K9, MIK, K3, slip 1 st, turn the work. **Row 15:** P3, MIP, P9, MIP, P54, MIP, P9, MIP, P4, slip 1 st, turn the work. **Row 16:** K4, MIK, K9, MIK, K56, MIK, K9, MIK, K6, slip 1 st, turn the work. **Row 17:** P89, slip 1 st, turn the work. **Row 18:** K6, MIK, K9, MIK, K58, MIK, K9, MIK, K8, slip 1 st, turn the work. **Row 19:** P8, MIP, P9, MIP, P60, MIP, P9, MIP, P9, slip 1 st, turn the work. **Row 20:** K9, MIK, K9, MIK, K62, MIK, K9, MIK, K11, slip 1 st, turn the work. **Row 21:** P105, slip 1 st, turn the work. **Row 22:** K11, MIK, K9, MIK, K64, MIK, K9, MIK, K14, slip 1 st, turn the work. **Row 23:** P14, MIP, P9, MIP, P66, MIP, P9, MIP, P15, slip 1 st, turn the work. **Row 24:** K15, MIK, K9, MIK, K68, MIK, K9, MIK, K18, slip 1 st, turn the work. **Row 25:** P125, slip 1 st, turn the work. **Row 26:** K18, MIK, K9, MIK, K70, MIK, K9, MIK, K22, slip 1 st, turn the work. **Row 27:** P22, MIP, P9, MIP, P72, MIP, P9, MIP, P23, slip 1 st, turn the work. **Row 28:** K23, MIK, K9, MIK, K74, MIK, K9, MIK, K28, slip 1 st, turn the work. **Row 29:** P151, slip 1 st, turn the work, replace pink SM with red SM, from now on the shoulders are highlighted with 4 red SM; place the pink SM between two needles before commencing next round. This SM shows both the beginning and the end of the round. The Anatomical Neck is finished. From now on the work continues in the round. **Round 30:** K28, MIK, K9, MIK, K76, MIK, K9, MIK, K48. **Round 31:** K29, MIK, K9, MIK, K78, MIK, K9, MIK, K49. **Round 32:** K30, MIK, K9, MIK, K80, MIK, K9, MIK, K50. **Round 33:** K182. **Round 34:** K31, MIK, K9, MIK, K82, MIK, K9, MIK, K51. **Round 35:** K32, MIK, K9, MIK, K84, MIK, K9, MIK, K52. **Round 36:** K33, MIK, K9, MIK, K86, MIK, K9, MIK, K53. **Round 37:** K194. **Round 38:** K34, MIK, K9, MIK, K88, MIK, K9, MIK, K54. **Round 39:** K35, MIK, K9, MIK, K90, MIK, K9, MIK, K55. The shoulder working is finished. Move the stitch-markers 1 st to the right and 1 st to the left to have 10 sts between red stitch-markers. From now on make increases inside the stitch-markers to increase sts for sleeves. SET ROW COUNTER TO ZERO – **Round 1:** K36, MIK, K9, MIK, K92, MIK, K9, MIK, K56. **Round 2 and following even rounds:** K to end without increasing. **Round 3:** K36, MIK, K11, MIK, K92, MIK, K11, MIK, K56. **Round 5:** K36, MIK, K13, MIK, K92, MIK, K13, MIK, K56. **Round 7:** K36, MIK, K15, MIK, K92, MIK, K15, MIK, K56. **Round 9:** K36, MIK, K17, MIK, K92, MIK, K17, MIK, K56. **Round 11:** K36, MIK, K19, MIK, K92, MIK, K19, MIK, K56. **Round 13:** K36, MIK, K21, MIK, K92, MIK, K21, MIK, K56. **Round 15:** K36, MIK, K23, MIK, K92, MIK, K23, MIK, K56. **Round 17:** K36, MIK, K25, MIK, K92, MIK, K25, MIK, K56. **Round 19:** K36, MIK, K27, MIK, K92, MIK, K27, MIK, K56. **Round 21:** K36, MIK, K29, MIK, K92, MIK, K29, MIK, K56. **Round 23:** K36, MIK, K31, MIK, K92, MIK, K31, MIK, K56. **Round 25:** K36, MIK, K33, MIK, K92, MIK, K33, MIK, K56. **Round 27:** K36, MIK, K35, MIK, K92, MIK, K35, MIK, K56. **Round 29:** K36, MIK, K37, MIK, K92, MIK, K37, MIK, K56. **Round 31:** K36, MIK, K39, MIK, K92, MIK, K39, MIK, K56. **Round 33:** K36, MIK, K41, MIK, K92, MIK, K41,

MIK, K56. **Round 35:** K36, MIK, K43, MIK, K92, MIK, K43, MIK, K56. **Round 37:** K36, MIK, K45, MIK, K92, MIK, K45, MIK, K56. **Round 39:** K36, MIK, K47, MIK, K92, MIK, K47, MIK, K56. **Round 41:** K36, MIK, K49, MIK, K92, MIK, K49, MIK, K56. **Round 43:** K35, MIK, K1, MIK, K51, MIK, K1, MIK, K90, MIK, K1, MIK, K51, MIK, K1, MIK, K55. **Round 45:** K36, MIK, K1, MIK, K53, MIK, K1, MIK, K92, MIK, K1, MIK, K53, MIK, K1, MIK, K56. **Round 47:** K37, MIK, K1, MIK, K55, MIK, K1, MIK, K94, MIK, K1, MIK, K55, MIK, K1, MIK, K57. **Round 49:** K38, MIK, K1, MIK, K57, MIK, K1, MIK, K96, MIK, K1, MIK, K57, MIK, K1, MIK, K58. **Round 51:** K39, MIK, K1, MIK, K59, MIK, K1, MIK, K98, MIK, K1, MIK, K59, MIK, K1, MIK, K59. **Round 53:** K40, MIK, K1, MIK, K61, MIK, K1, MIK, K100, MIK, K1, MIK, K61, MIK, K1, MIK, K60. **Round 54:** K to end, remove pink SM, K42 to rejoin red SM. The YOKE is completed.

BODY – SET ROW COUNTER TO ZERO – With a scrap yarn in contrasting colour and a 3.75mm crochet hook ch6 for each armhole. Place the 64 sts of first Sleeve on first scrap yarn and pick up 6 sts from 6ch (= 1 st from each ch) for armhole, K103 for Back, place the 64 sts of 2nd

Sleeve on second scrap yarn and pick up 6 sts from 6ch (= 1 st from each ch) for other armhole, K103 for Front. There are 218 sts on needle. Cont to work 78 rounds in stocking st. With 3.75mm knitting needles Cast off all sts with I-cord casting off technique.

SLEEVES: make two alike – WORK EACH SLEEVE USING 4MM CIRCULAR NEEDLE WITH 40CM CABLE OR WITH 80CM CABLE FOR MAGIC LOOP TECHNIQUE. SET ROW COUNTER TO ZERO. With 4mm circular needle pick up the 64 sts of first Sleeve, remove scrap yarn and pick up 7 sts from armhole ch: there are 71 sts on needle. Place 1 SM to central st of these 7 sts and work Sleeve in rounds of st st, decreasing 1 st at each side of SM on 21st, 41st, 61st, 81st, 101st and 121st rounds. For decreasing, work SKIP (= slip 1 st, knit 1 st, pass slipped st over K1) before SM and K2tog after SM. When 122 rounds have been worked, using 3mm circular needle with 40cm cable cast off all sts with I-cord casting off technique. Cut yarn and weave in ends. Work other Sleeve in the same manner.



T-shirt with mittens

LANA GATTO®

Size: UK 8/10 (12/14) - US 4/6 (8/10) - EU 34/36 (38/40)

Note: figures in brackets () refer to larger size. Where only one figure is given this refers to both sizes.

Skill Level: easy

How much yarn: 7 (8) balls (each ball 50g and 90m) of Oslo yarn (89% Wool, 11% Nylon) shade no. 31114

Needles: A pair of 5.50mm knitting needles

Sewing needle: Yarn needle with rounded point

STITCHES

Using needles: K2, P2 rib - Garter stitch (g st)

Reverse stocking stitch (rev st st)

TENSIONS

12 sts and 20 rows measure 10cm square over rev stocking stitch with 5.50 mm needles.

14 sts measure 10cm in width over K2, P2 rib with 5.50 mm needles. Take time to check tensions before starting work: it is essential to work to the stated tensions to achieve success.

T-SHIRT INSTRUCTIONS

Back: with 5.50mm needles cast on 51 (56) sts and, for border, work 4 rows in garter stitch. Cont to work in rev stocking st. When Back measures 38(40)cm from beg, create sleeves. Cast on 30 new sts at end of next 2 rows and work all sts for 18(20)cm as follows: first and last 2 sts in g st for sleeve borders and rem 107 (112)sts in rev st st. Now, for neck, cast off centre 25 (28) sts and leave on needle rem 43(44) sts of each shoulder.

Front: work as Back until Front measures 50(53)cm from beg. Shape neck: cast off centre 11 (14) sts. Join another

ball of yarn and cont to work separately on either side, casting off on neck edge every alternate row: 3 sts once and 2 sts once, then dec on neck edge 1 st on next and alternate row twice (7 sts have been decreased on each neck side). When neck shaping measures 6(7)cm, leave on needle rem 43 (44) sts of each shoulder.

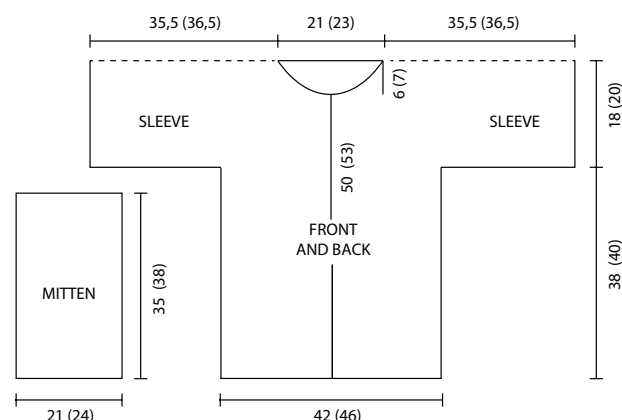
MITTEN INSTRUCTIONS (make 2)

For each mitten, with 5.50mm needles cast on 30 (34) sts. Work 35(38)cm in K2, P2 rib. Then cast off.

FINISHING

T-Shirt: with yarn needle graft shoulder seams in darning st. Then sew side and sleeve seams.

Mittens: sew side seam of each mitten, leaving an about 3cm opening for thumb 2.5cm from upper edge.





Size: fits from UK 8/12 - US 4/8 - EU 34/38

Skill Level: advanced

How much yarn: 3 balls (each ball 100g and 300m) of **Vienna** yarn (84% Extrafine Merino Wool SW, 16% Baby Alpaca) shade no. 31066

Needles: A 5.00mm circular needle with 60cm cable. A 5.00mm circular needle with 100cm cable.

Sewing needle: Yarn needle with rounded point

Other items: Stitch markers

STITCHES

Using needles: K2, P2 rib - K1, P1 rib

TENSION (after work has been steamed)

26 sts and 30 rows measure 10cm square over K2, P2 rib with 5.00 mm needles without widening rib. Take time to check tension before starting work: it is essential to work to the stated tension to achieve success. **Note:** since rib is elastic, the measurements could be variable.

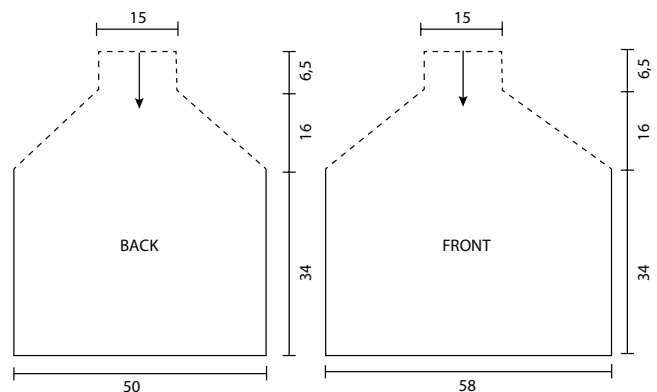
INSTRUCTIONS (worked in one piece)

Work top-down in one piece, starting from **Back neckedge center**. Using circular needle with 60cm cable cast on 81 sts and join work in round as follows: slip 1st stitch from right needle to left needle, then pass last st over slipped st. 80 sts remain. Place 1 stitch-marker (SM) on right-hand needle before passed st to indicate round beg, corresponding to Back center. Cont to work **19 rounds** in K2, P2 rib, setting up the work as follows: K1 (= center Back), * P2, K2; rep from * until to last 3 sts, P2, K1. Then work **20th round** as follows: 15 sts in K2, P2 rib (half Back), place 1 SM, 10 sts in K2, P2 rib (shoulder), place 1 SM, 30 sts in K2, P2 rib (Front), place 1 SM, 10 sts in K2, P2 rib (shoulder), place 1 SM, 15 sts in K2, P2 rib (half Back). Cont to work in K2, P2 rib the 10 sts for each shoulder as before, inc 1 st at SM sides every round for 48 times. Cont to work in K2, P2 rib and, when the number of stitches makes it necessary, change to circular needle with 100cm cable: there are 272 sts whose 126 sts for Back, for Front and 10 sts for each shoulder.

Leaving unworked 126 sts for Back, continue to use circular needles to work knitting flat, in back-and-forth rows, as traditional straight needles, not in the round, to work rem 126 sts for **Front** plus the 10 sts from each shoulder (= 146 sts). On the 1st row, at the 10 sts from the right shoulder, inc 1 in the first 2 sts (= in the same st, work K1 and P1) and work the following 8 sts in K2, P2 rib, while at the 10 sts from the left shoulder, work 8 sts in K2, P2 rib and inc 1 in the following 2 sts (= in the same st, work P1 and K1). On the 150 sts obtained, continue in K2, P2 rib, working the first and last 4 sts in K1, P1 rib for 34 cm, then cast off. Now pick up the 126 sts left unworked and work **Back** as Front, increasing 2 sts at each end, in correspondence to the first and last 2 sts (= 130 sts). **Note:** before starting the increases make sure the 2 initial and final sts of the Back appear as K sts, otherwise move the sts without working them, making a crossover.

FINISHING

Sew about 16cm side seams, leaving an about 18cm opening for arms.



Project made by **Elsa Faccio**



Size: S (M-L) – **Skill Level:** advanced

Note: figures in brackets () refer to larger size. Where only one figure is given this refers to all sizes.

How much yarn: 4 balls (each ball 100g and 300m) of **Crumble** yarn (80% Virgin Wool SW, 10% Nylon, 10% Polyester) shade no. 31072. **Note:** the indicated balls of yarn refer to the fit of size S worn in the photo. For a larger size calculate a greater quantity of yarn.

Hook: A 5.50mm crochet hook

Sewing needle: Yarn needle with rounded point

STITCHES

Using hook: chain (ch) – Slip stitch (ss) – Treble (tr)

TENSION

11 sts and 8 rounds measure approx 10cm square over openwork pattern with 5.50 mm needles and 3 strands of yarn held together. Take time to check tension before starting work: it is essential to work to the stated tension to achieve success.

INSTRUCTIONS

Note: for a perfect fit, following the instructions of the published model, it is recommended to make a paper template with your own measurements and to gradually place the work on it.

Work dress in one piece, "top down", starting from **neck-line**. **Foundation round:** ch 80 (88-96), join in a ring with 1 ss into first ch and work as follows: **1st round:** * 1 tr (**Note:** first treble of each round corresponds to ch3), ch1, miss 1 ch of foundation round *; rep from * to * 5 (7-8) more times (for shoulder), 1 shell (= into same following ch of foundation round work: 1 tr, ch1 and 1 tr – for 1st raglan shaping), ch1, miss next ch of foundation round; rep

from * to * 12 (12-13) times (for Front), 1 shell (for 2nd raglan), ch1, miss next ch of foundation round, rep from * to * 6 (8-9) times (for other shoulder), 1 shell (for 3rd raglan), ch1, miss next ch of foundation round, rep from * to * 12 (12-13) times (for Back), 1 shell (for 4th raglan), ch1; end this round and following rounds with a ss into 3rd of first 3 ch corresponding to 1st tr. **2nd round:** work 1 tr in each tr and in each ch1-space of previous round; and work (ch1, 1 shell, ch1) at top of each shell of previous round. **3rd and 4th rounds:** 1 tr in each tr and in each ch1-sp (before and after shells) of previous round and work (ch1, 1 shell, ch1) at top of each shell of previous round. For **yoke**, rep last 4 rounds (= 1 round with spaces and 3 rounds of trebles, increasing the number of repetitions between asterisks – i.e. from * to * – based on the working) once; now rep first 3 rounds twice, then rep first 2 rounds 4 times. **Note:** when repeating 1st round, miss 1 tr of previous round instead of 1 ch. Place 1 stitch-marker into each of 4 shells, cont to work next rounds on Front and Back stitches, instead do not work side sts of shoulders (where the sleeves will then be worked). **1st round:** 1 tr into each tr and into each ch1-sp of previous round. **2nd round:** * 1 tr, ch1, miss 1 st; rep from * to end. **3rd round:** 1 tr into each tr and into each ch1-sp of previous round. **4th round:** 1 tr into each tr of previous round. Rep last 4 rounds until you reach the desired length for the dress, starting **Body** part from 1st (2nd-3rd) round. To shape hips, at every 3rd round work 1 shell into ch1-sp of previous round on Front and Back sides. These increases must be made only on the sides and not on the Front and Back and calculated according to your fit. At end, fasten off.

Sleeves: (make 2) for each Sleeve, work on side stitches before indicated and repeat the last 4 rounds given for the Body until reaching the desired length. Fasten off.



Size: UK 8/10 (12/14) - US 4/6 (8/10) - EU 34/36 (38/40)

Note: figures in brackets () refer to larger size. Where only one figure is given this refers to both sizes.

Skill Level: advanced

How much yarn: 10 (12) balls (each ball 50g and 115m) of **Sacher** yarn (44% Nylon, 24% Polyester, 16% Mohair, 16% Alpaca) shade no. 31108

Needles: A pair of 4.50mm knitting needles

An additional 4.50mm knitting needle

A Double-pointed (Dp) knitting needle

Sewing needle: Yarn needle with rounded point

STITCHES

Using needles: tubular stitch - K1, P1 rib

Stocking stitch (st st) - Reverse stocking stitch (rev st st)

Double moss st

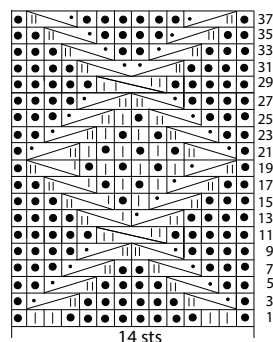
DIAMOND STITCH: work over 14 sts, following diagram and key. Rep Rows 3-38 throughout.

HONEYCOMB STITCH: (work over a multiple of 4 sts plus 2 sts)

Row 1: (RS of work) * 2 Crossed Right stitches = C2B (= slip 1 st onto Dp needle, hold to the back, K1, K1 from Dp needle), 2 Crossed Left stitches = C2F (= slip 1 st onto Dp needle, hold to the front, K1, K1 from Dp needle); rep from * 4 times, C2B. Row 2: P to end. Row 3: * C2F, C2B; rep from * 4 times, C2F. Row 4: P to end. Rep these 4 rows throughout.

Using hook: double crochet (dc)

DIAMOND STITCH



KEY □ = K1 □ = P1

□ = C3Fkp (slip 2 sts onto Dp needle, hold to the front, P1, K2 sts from Dp needle)

□ = C3Bkp (slip 1 st onto Dp needle, hold to the back, K2, P1 from Dp needle)

□ = C4F (slip 2 sts onto Dp needle, hold to the front, K2, K2 sts from Dp needle)

□ = C3F (slip 2 sts onto Dp needle, hold to the front, K1, K2 sts from Dp needle)

□ = C3B (slip 1 st onto Dp needle, hold to the back, K2, K1 from Dp needle)

On even rows, not shown in diagram, work stitches as they appear excluding sts in double moss st, which are always worked in double moss st.

Each diagram square corresponds to 1 stitch and 1 row.

TENSIONS Worked with 2 strands of yarn held together 18 sts measure 10cm in width over honeycomb st with 4.50 mm needles. 14 sts measure 8cm in width over diamond st with 4.50 mm needles. 16 sts measure 10cm in width over stocking st and reverse stocking st with 4.50mm needles. Take time to check tensions before starting work: it is essential to work to the stated tensions to achieve success.

INSTRUCTIONS (work all pieces with two strands of yarn held together). **Top-Back:** with 4.50mm needles cast on 62 (68) sts and, for border, work 4 rows in tubular st and

continue in K1, P1 rib until border measures 8cm from beg, increasing 4 sts evenly across last row: there are 66 (72) sts. Then work as follows: 14 sts in Diamond stitch, 2 (3) sts in stocking st, 2 (3) sts in rev stocking st, 2 (3) sts in stocking st, 4 sts in rev stocking st, 18 sts in Honeycomb st, 4 sts in rev stocking st, 2 (3) sts in stocking st, 2 (3) sts in rev stocking st, 2 (3) sts in stocking st, 14 sts in Diamond stitch. When work measures 10cm from border, inc 1 st at each end of next and following alternate row once, * then following 4th row once and following alternate row once; rep from * twice more. There are 82 (88) sts. Work increased sts in stocking st. When Back measures 32(34)cm from beg, shape armholes. Cast off 3 sts at beg of next 2 rows, then dec 1 st at each end on next and every following alternate row 3 times. When armhole measures 18(20)cm, shape neck: cast off centre 22 (24) sts, join another ball of yarn and continue separately on either side, casting off 2 sts at neck edge on next and following alternate row (4 sts decreased on each neck side) When neck shaping measures 3cm, leave on additional needle remaining 20 (22) sts of each shoulder. **Note:** when working the last diamond, do not cross the central sts, but work the sts as they appear. When there are 3 rows left to the end of the shoulders, work in stocking stitch.

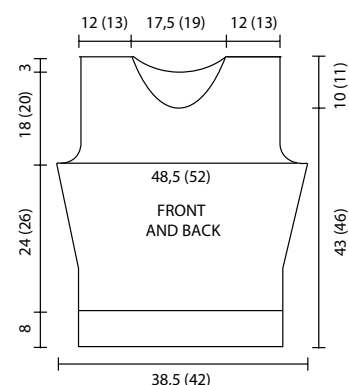
Front: work as Back until Front measures 43(46)cm from beg. Shape neck: cast off centre 18 (20) sts. Join another ball of yarn and cont to work separately on either side, casting off on neck edge every alternate row: 2 sts twice, then dec on neck edge 1 st on next and following alternate row (6 sts have been decreased on each neck side). When neck shaping measures 10(11)cm, cast off rem 20 (22) sts of each shoulder.

Mittens: (make 2) for each mitten, with 4.50mm needles cast on 29 (33) sts and work in K1, P1 rib. When work measures 22(23)cm from beg, inc 1 st at each end of next and following 18th row. There are 33 (37) sts. When work measures 45(48)cm from beg, cast off.

FINISHING

Top: join a shoulder seam, using 3 needle cast off technique (= hold the needles with RS towards each other. Use a third needle and knit 1 st on each needle together, knit two more together and then slip 1st st over the next. Repeat knitting 2 tog and then cast off). For **neck border**, pick up approx 87 (100) sts around Back-and-Front neckline and work 9cm in K1, P1 rib and 4 rows in tubular st, then cast off, grafting sts with yarn needle in darning st. Join other shoulder as first shoulder and sew neck seam. Sew side seams. Fold border in half on RS and sew with small stitches hidden, under tubular st. With crochet hook, work a round of dc around each armhole.

Mittens: sew side seam of each mitten, leaving an approx 3cm opening for thumb 2.5cm from lower edge.





Size: UK 10/12 – US 6/8 – EU 36/38

Skill Level: intermediate

How much yarn: 16 balls (each ball 25g and 130m) of **Eclaire** yarn (100% Nylon) shade no. 31097

Needles: A 3.00mm knitting needles

Sewing needle: Yarn needle with rounded point

STITCHES

Using needles: tubular stitch (to cast on)

Reverse stocking stitch (rev st st).

TENSION

23 sts and 36 rows → measure 10cm square over rev stocking st with 3.00 mm needles. Take time to check tension before starting work: it is essential to work to the stated tension to achieve success.

INSTRUCTIONS

Back: with 3.00mm needles cast on 134 sts and work 2 rows in tubular st. Cont to work in rev stocking st. Dec 1 st at each end, inside first and last 4 sts, and AT THE SAME TIME at either side of 40 central sts (= 4 decs across same row) on 20th and every following 16th row 7 times (for right hand side decs work P2tog t.b.l., for left hand side decs work P2tog): 106 sts remain. When Back measures 40cm from beg, inc 1 st at each end, inside 1 st, on next and every following 12th row 5 times: 116 sts remain. When Back measures 56cm from beg, shape armholes: cast off 4 sts at beg of next 2 rows, then dec 1 st at each end, inside first and last 5 sts, on next and every following alternate row 5 times. 98 sts remain. When Back measures 74cm from beg, shape shoulders: cast off 5 sts at beg of next 8 sts and 8 sts at beg of following 2 sts. Cast off rem 42 sts for neckline.

Front: work as Back until Front measures 67cm from beg. Shape neck: cast off centre 20 sts, join another ball of yarn and cont to work separately on either side, dec 1 st on neck edge, inside 5 sts, on next row and every alternate row 9 times, then every following 4th row twice. Shape shoulders as Back.

Sleeves: for each sleeve, with 3.00mm needles cast on 100 sts and work 2 rows in tubular st. Cont to work in rev stocking st. Dec 1 st at each end, inside first and last 4 sts,

and AT THE SAME TIME at either side of 26 central sts (= 4 decs across same row) on 16th and every following 6th row 10 times: 60 sts remain. When Sleeve measures 21cm from beg, inc 1 st at each end, inside 1 st, on next and every following 6th row 7 times: there are 74 sts. When Sleeve measures 36cm from beg, shape sleeve top. Cast off 4 sts at beg of next 2 rows, then dec 1 st at each end, inside first and last 4 sts, on next and every alternate row 10 times, then every following 4th row 6 times and every following alternate row 5 times. When Sleeve measures 52cm from beg, cast off rem 24 sts.

Scarf: (make 2 pieces alike) for each piece cast on 110 sts and work 2 rows in tubular st. Cont to work in rev stocking st. Dec 1 st at each end, inside 5 sts, on 11th row and every following 6th row 20 times. When piece measures 60cm from beg, cast off rem 70 sts.

FINISHING

Sew shoulder seams. Set in sleeves. Sew sleeve and side seams. Join the 2 scarf pieces together, sewing cast-off row seam. Fold in half, breadthwise and WS facing, centre 25cm of Scarf and sew this folded part along Back neckline plus the first 4cm of each side of the Front, leaving free remaining Scarf part at both ends.

